

URB GROUP

GENERAL PRESENTATION

URB



URB Group - Rulmenti S.A.
320, Republicii Street, Zip code 731108 Barlad Romania
tel: +40235412120 fax: +40235-30.82.00
info@urb.ro - www.urbgroup.com



CONTENT



Who we are: History & Facilities & Sales Info



Design Capabilities & Applications



Manufacturing Processes & Controls



Quality Control & Certificates

WHO WE ARE



1953

Barlád Factory started production



1973

The Forging technology from Haterbur and Wagner Germany was applied successfully



1975
–
1982

Modernization of turning and grinding workshops



1992
–
1996

Continuous modernization of various machinery and equipment



2000

Finalization of privatization process



2001
–
2005

A period of big investments in machine technologies



2006

Founding Anadolu Rulman factory (ART) in Turkey



2007

Acquisition of MGM factory in Hungary



2011

Starting the building of India factory



2013

URB celebrates 60 Years Anniversary



www.urbgroup.com

RULMENTI S.A. (Romania)



Established in **1953**
Total Area: **1.300.000 m²**
Covered Area: **400.000 m²**

BEARING TYPES	SIZE RANGE (MM)	
Radial Ball Bearings	$150 \leq d \leq 400$	$300 \leq D \leq 600$
Thrust Bearings	$10 \leq d \leq 320$	$24 \leq D \leq 420$
Cylindrical Roller Bearings	$15 \leq d \leq 750$	$30 \leq D \leq 910$
Spherical Roller Bearings	$40 \leq d \leq 450$	$80 \leq D \leq 650$



Anadolu Rulman (Turkey)



Established in **2005**
Total Area: **125.000 m²**
Covered Area: **10.000 m²**

BEARING TYPES	SIZE RANGE (MM)	
Single Row Deep Groove Ball Bearings	$10 \leq d \leq 250$	$50 \leq D \leq 300$
Tapered Roller Bearings	$10 \leq d \leq 160$	$100 \leq D \leq 250$
Induction Coated Shaft	$8 \leq d \leq 70$	



MGM (Hungary)



Established in **1950**
Total Area: **64.000 m²**
Covered Area: **40.000 m²**

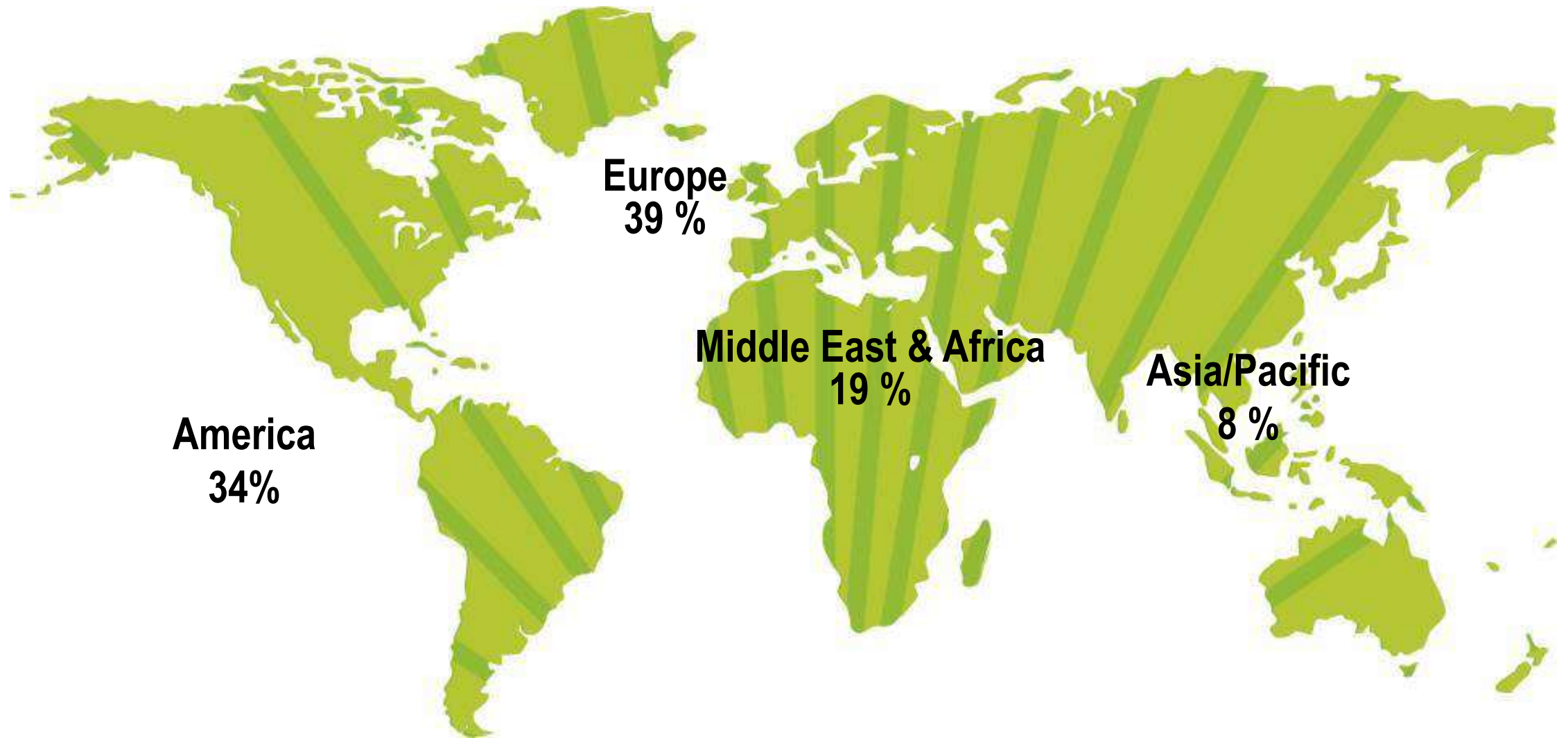
BEARING TYPES	SIZE RANGE (MM)	
Single Row Tapered Roller Bearings	$50 \leq d \leq 160$	$100 \leq D \leq 300$
Paired or Double Row Tapered Roller Bearings	$50 \leq d \leq 160$	$100 \leq D \leq 300$
Single Row Deep Groove Ball Bearings	$50 \leq d \leq 130$	$100 \leq D \leq 200$

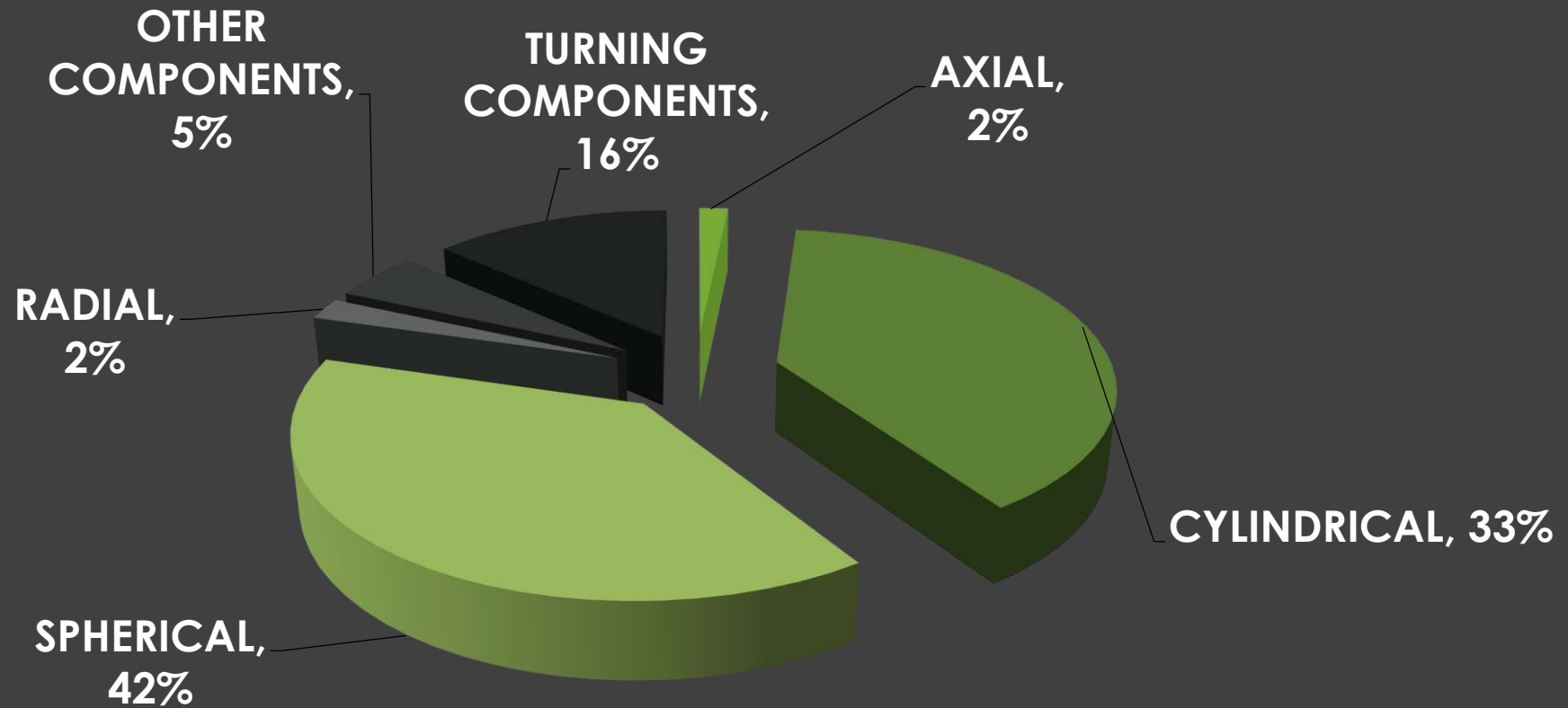


URB INDIA 2018









MAIN CUSTOMERS - RAILWAY



ROMANIAN Railways



POLISH Railways



TURKISH Railways



BULGARIAN Railways



GREEK Railways



VIETNAMESE Railways

REFERENCES



www.urbgroup.com

2. DESIGN CAPABILITIES & APPLICATIONS

Applications



OIL INDUSTRY

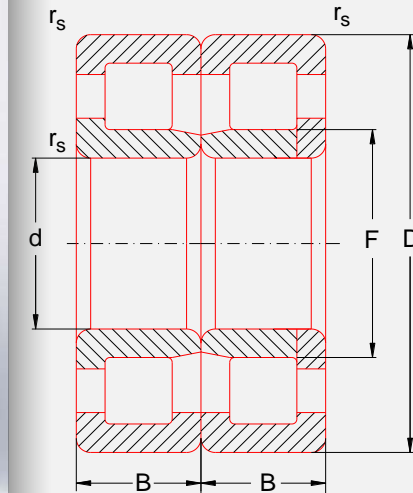


2. DESIGN CAPABILITIES & APPLICATIONS

Applications



RAILWAYS



2. DESIGN CAPABILITIES & APPLICATIONS

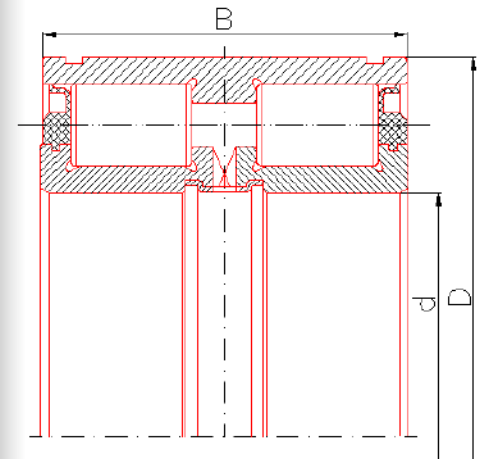
Applications



WIND ENERGY

small and medium sizes

- Rotor Pitch / Nacelle Yaw
- Gearbox

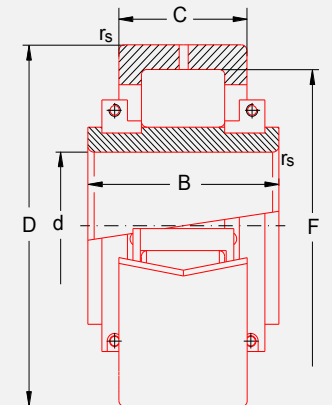


2. DESIGN CAPABILITIES & APPLICATIONS

Applications



METALLURGY

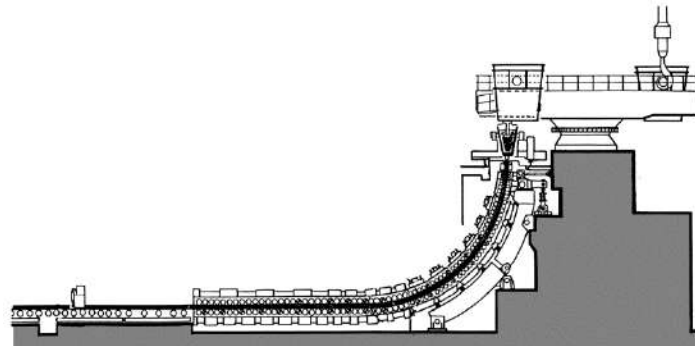


2. DESIGN CAPABILITIES & APPLICATIONS

Applications



AGRICULTURE, MINING, CEMENT, METALS, TRUCKS, CRANES



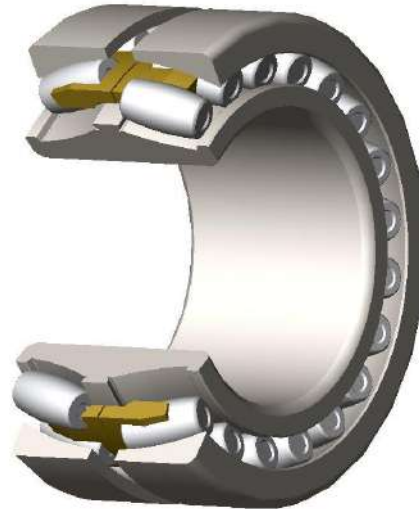
www.urbgroup.com

2. DESIGN CAPABILITIES & APPLICATIONS

Applications



ELEVATORS, ROPE SHEAVES



www.urbgroup.com



Certification **QMC- ISO 9001 : 2008 / TUV SUD**

certificate Registration No.: 12 100 52718 TMS from 21.09.2016

Certificate validity: 14.09.2018

Certification **QMC – ISO/TS 16949 : 2009 / TUV SUD**

certificate Registration No.: 12 111 52718 TMS from 21.09.2016/ IATF Certificate No.:0248049

Certificate validity: 14.09.2018

Certification **BMS – IRIS.REV.2:2009 / LLOYD'S REGISTER**

certificate –Register -No.: BUC6018759/IRIS from 16.12.2013 and modified: 08.11.2016

Certificate validity: 15.12.2019

Certification **EMS – ISO 14001:2004/ LLOYD'S REGISTER**

certificate No.:10033325 from original approval 22.09.2011; current certificate:22.09.2017

Certificate validity: 21.09.2019

Certification **OH&SMS – OHSAS 18001:2007/ LLOYD'S REGISTER**

certificate No.:10033327 from original approval 29.09.2011;current certificate:29.09.2017

Certificate validity: 28.09.2020



THANK YOU
FOR YOUR ATTENTION

